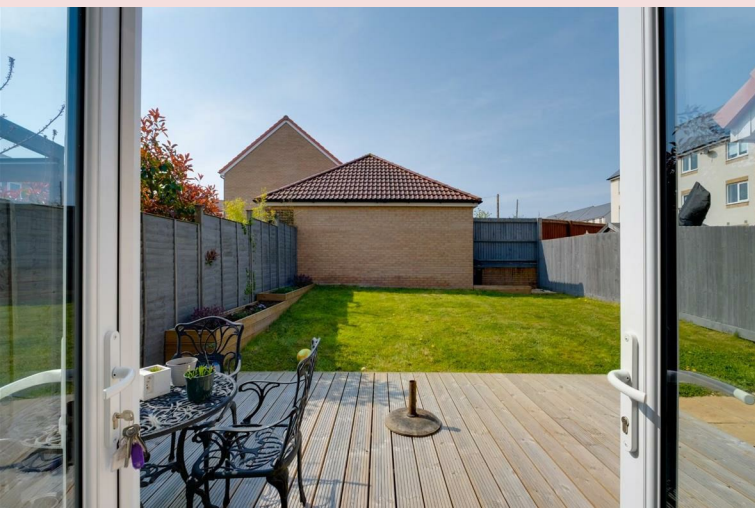


Boardwalk

Marigold Close

LYDE GREEN, BRISTOL

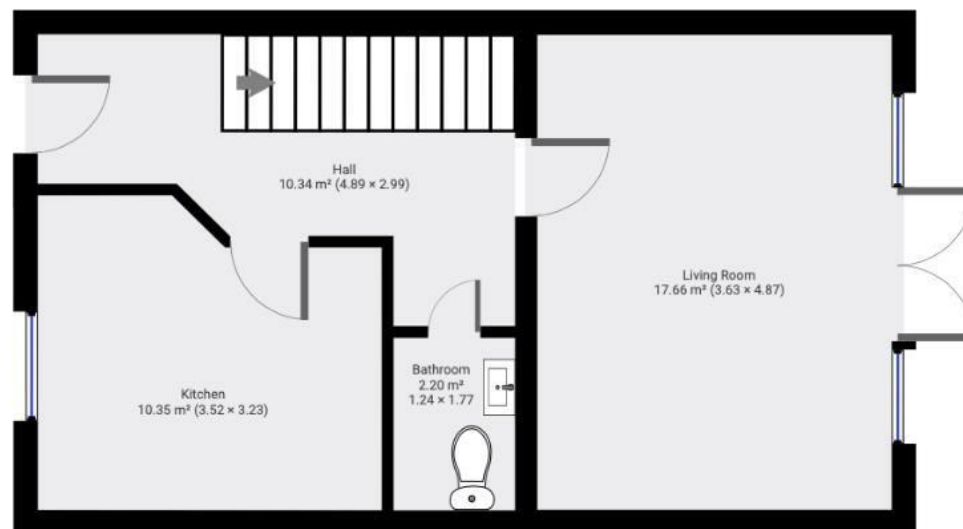


TOTAL AREA: 103.88 m² • LIVING AREA: 103.88 m² • FLOORS: 3 • ROOMS: 5

SUBMITTED BY Charlie Nowlan
charlienowlan@gmail.com

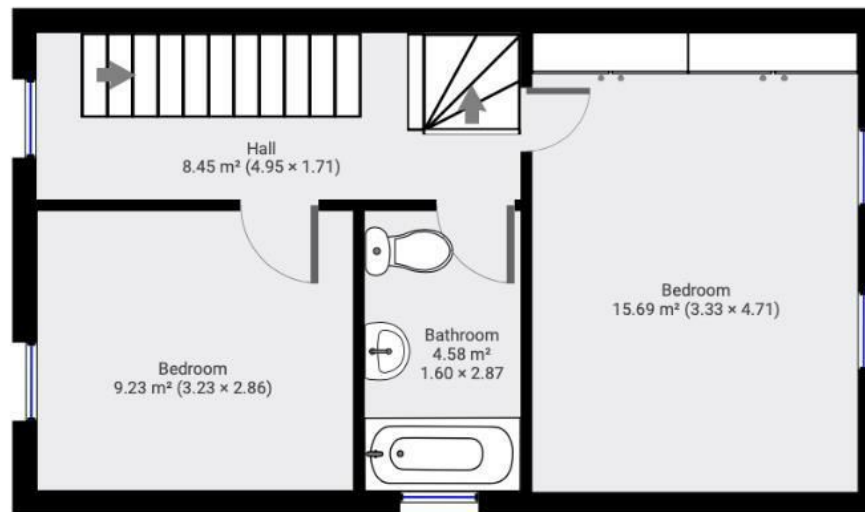
▼ Ground Floor

TOTAL AREA: 40.54 m² • LIVING AREA: 40.54 m² • ROOMS: 2



▼ 1st Floor

TOTAL AREA: 37.91 m² • LIVING AREA: 37.91 m² • ROOMS: 2



THIS FLOORPLAN IS PROVIDED WITHOUT WARRANTY OF ANY KIND. SENSOPIA DISCLAIMS ANY WARRANTY INCLUDING, WITHOUT LIMITATION, SATISFACTORY QUALITY OR ACCURACY OF DIMENSIONS.

Page 1/2

Boardwalk

Marigold Close

LYDE GREEN, BRISTOL



£400,000



Bristol, BS16

7GU



3 Bedrooms



3 Bathrooms

'We have loved living in our home for the past 5 years. The location offers us the best of city and rural living. We live on a quiet cul-de-sac surrounded by greenery and have spent many sunny days cycling, running or walking in the area and will really miss being able to cycle to a cafe (or pub!) on the Bristol-Bath cycle path.

As we transitioned from a couple to a family, we found the area had so much more to offer discovering all the great parks and amenities in Lyde Green and Emerson's Green. The favorite being 5 minutes from the front door (at toddler speed). We will really miss living in the area, and my husband will miss living close to a Screwfix!'

